

1	Castor	4
2	Screw guide sleeve	2
3	Foot	2
4	JSDR1-2-500 / 650-0-B-V	2
5	Lite side bracket	2
6	Lite frame L	2
7	Lite frame R	2
8	M6x12 flange machine screw	8
9	M8-1.25x8WM set screw	2
10	Rubber washer waist shape	4
11	Screw clip	2
12	M6-14 Machine screw	8
13	ST5-16 wooden screw	8
14	TF-D7 Rubber washer	2
15	TF-D7 Rubber washer-5mm	2
16	0.9m connect cable	1
17	Cable click 70mm-0-ATC-17 white	5
18	Velcro sticker, Hair surface-85x50	1
19	Velcro sticker, Hook surface-85x50	1
20	Allen wrench - 4mm / 5mm	1

SCAN SØRLIE

SCAN SØRLIE

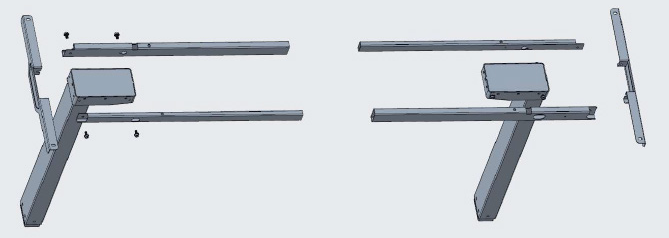


**Lite 2.0**  
**UPLi2272**

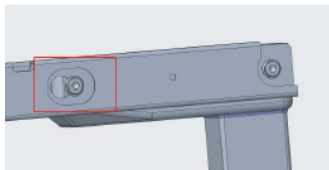


NEW NORDIC DESIGN

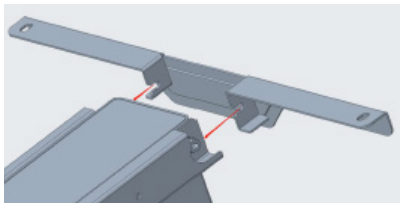
Frame Structure: Dual frame, elegant, durable and adjustable



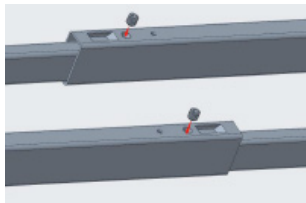
Details:



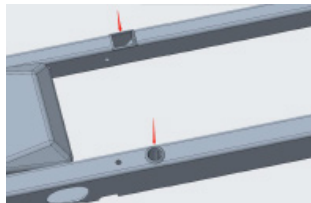
1. Pre-install screws to assemble the frame and columns



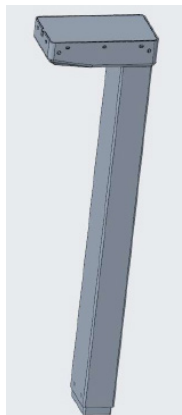
2. Pre-install Side bracket only 2 screws



3. Single screw to adjust and fix the frame length



4. Wooden screws to fix tabletop. Guiding parts through the frame.



5. Column -

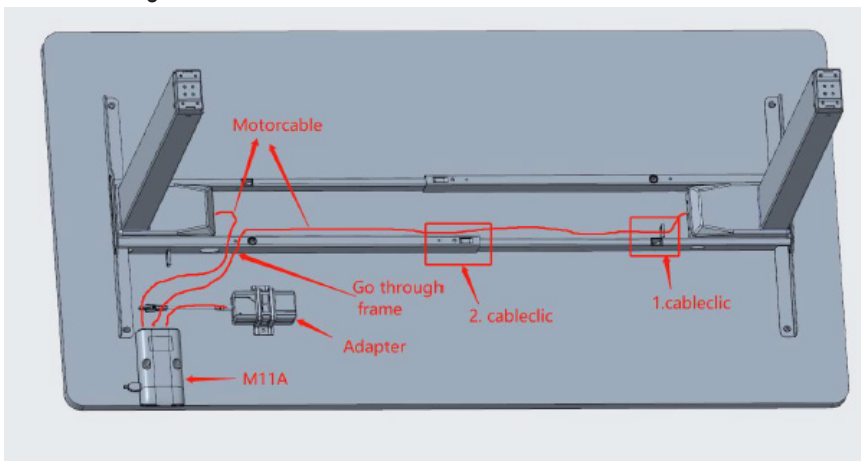
- Installation length: 650mm
- Stroke length: 495 mm
- Tube: 80x50; 70x45
- Force: Desk 800 N
- Speed: Desk 30 mm/sec.
- Low noise: Under 48 dB



Key Features:

- "All in one" package / Light weight: under 20 kg / Small package: 793x228x135
- Adjustable dual frame design (40x20 profile) R12R column (Tube 80x50; 75x45)
- Low noise: under 48 dB / Price level: entry level product

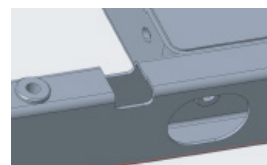
Cable management:



Cableclick 1

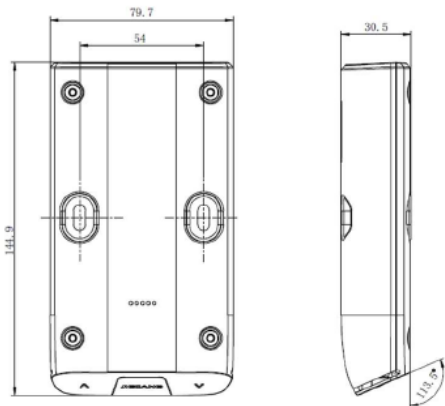


Frame

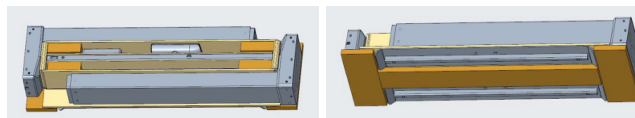


Electric parts 2in1 controlbox +SMPS

- Up/Down button / • Anti collision (Power) /
- Standby power 0,1W / • 1 USB, 5V 2A output
- Customer logo optional



SCAN SØRLIE



Package design:

- Size: 793x228x135 (35 pcs EU pallet)
- Package Weight: Approx. 20 kg (2 stage)
- Container load (standard 20")
- QTY: 980 pcs

SCAN SØRLIE